



Simple, Flexible, Easy to Install

Intel® SDM Ready Display



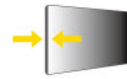
Hybrid SDM
Slot Design



Ultra High Resolution



High Brightness



Stylish Thin Design



Long Operational
Hours (24hrs/7days)



Portrait /
Landscape

AUO SDM display series features the integrated Intel® Smart Display Module (Intel® SDM) for digital signage and video wall applications. Retailers and system integrators like, are searching for simple all-in-one solutions with hassle free operations. The AUO SDM series delivers on these requirements by providing a scalable, future proof, plug and play solution.

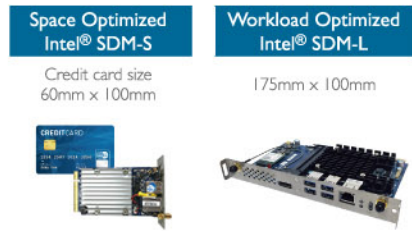
The AUO SDM series is designed to handle the rigors of 24 / 7 commercial applications but flexible enough to support easy upgrades and repairs. The feature rich scalable platform allows for simple installation, extended compatibility and the ability to fit into a diverse set of markets.

Key Features

- Supports Intel® SDM specifications with plug-in PC options
- Supports various generations of Intel processors including Intel Atom® and Intel® Core™ processors
- Simplified hybrid slot design is compatible with both Intel® Smart Display Module Small and Large
- Plug and play SDM for easy installation and maintenance that's also upgradable
- Highly flexible. Capable of supporting a variety of peripheral devices and operating systems
- Commercial grade reliability and quality

Intel® SDM The Smart New Option

The Intel® SDM has evolved from the Open Pluggable Specification (OPS). It offers a smaller form factor and can be powered by a wide range of Intel® processors. The player is available in two form factors the SDM-S and the larger SDM-L. Intel® SDM-S is roughly the size of a credit card, ideal for low power consumption, basic signage applications. Intel® SDM-L is designed for high-performance computing implementation. These units provide users with the flexibility to select the platform and features that best support their needs.



AUO SDM Displays Most Compatible Solutions

The AUO SDM series offers its users the compatibility, ease of installation, simplified maintenance, and clear path for upgrades that the industry requires. Our industrial-grade panels ensure longevity and reliability in the most demanding of environments. AUO makes it easier than ever for customers to take advantage of high performance displays, flexible integrated media players, and clean integrations in a simple to install, all-in-one package.



UHD 4K SDM Series Stylish Even Bezel Design

AUO's UHD 4K SDM series delivers outstanding picture quality with vivid details and realistic images. Sharp, clear content and text make your application come to life. Coupled with a 4-sided even bezel design, the new UHD 4K SDM product lineup provides an immersive and seamless viewing experience.

In addition, USB plug-and-play allows content to be loaded in seconds. Connecting multiple displays is simplified by daisy chaining the displays via HDMI.



AUO Hybrid Slot Design Compatible with both Intel® SDM-S and -L

AUO's unique hybrid slot design is compatible with both of the Intel SDM formats. This allows users greater flexibility in selecting the computing engine that's optimized for their specific needs.

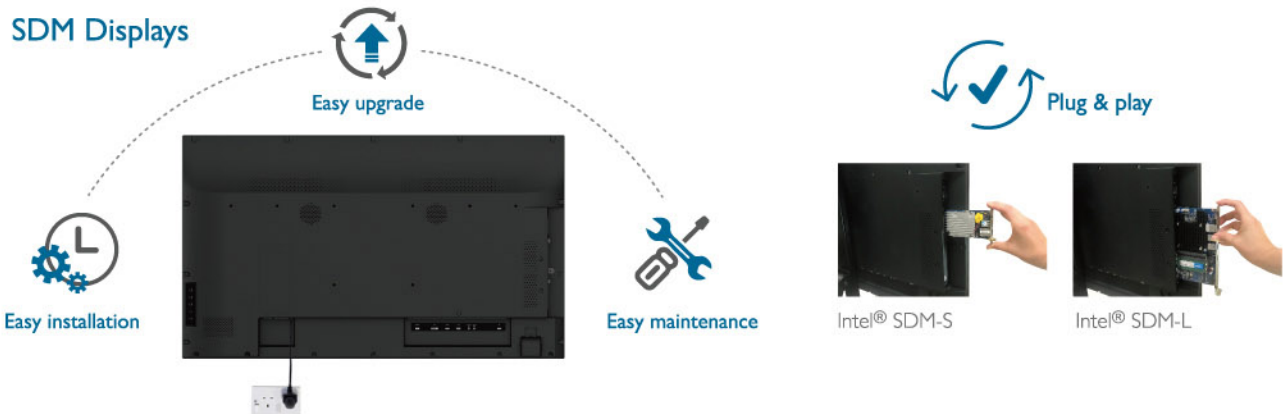
The Intel® SDM-S is designed for simple digital signage applications such as transportation routes and timetables, information screens or a standalone advertising display. Intel's SDM-L is the perfect solution for enterprise digital signage applications, large video walls, menu boards, interactive retail displays and other IoT applications.



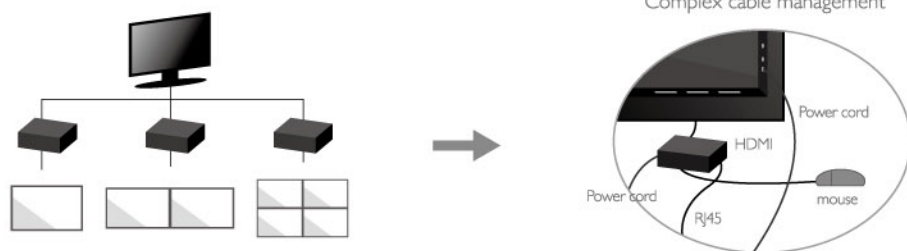
Easy Installation, Upgrade and Maintenance

The AUO SDM displays eliminate the limitations of SoC. SDM is fully compatible with Windows, Android, and Linux based OS solutions allowing for more CMS options. Unlike the SoC solutions, the SDM offering is fully upgradable and can be repaired. SDM further enhances the solution by reducing cabling and the need to mount an external media player.

AUO SDM displays can be installed easily with just a single power cord. The embedded player can be upgraded or replaced by simply swapping out the card. The plug-and-play system also makes onsite service and maintenance simple, while saving installation time and labor cost.



Media Player



SoC Digital Signage



Maximum Integration and Flexibility

In addition to compatibility with Windows, Android, and Linux OS platforms, the SDM players offers more functionality and flexibility in the support of a variety of peripheral devices such as sensors, cameras and RFID readers for creating a more complete customer experience. This simple but powerful system enables integrators to provide enriched interactions and increase consumers' engagement while lightening their work load.





Product Specification

Product Name	PUSDM55A	PUSDM65A	PUSDM75A	PUSDM85A
Model	55" SDM	65" SDM	75" SDM	85" SDM
Resolution	3840 x 2160	3840 x 2160	3840 x 2160	3840 x 2160
Brightness	500 nits	500 nits	500 nits	500 nits
Contrast Ratio	4000:1	4000:1	4000:1	4000:1
I/O (Signal Input)	HDMI x2, DP x1, USB x1	HDMI x2, DP x1, USB x1	HDMI x2, DP x1, USB x1	HDMI x2, DP x1, USB x1
I/O (Signal Output)	HDMI x1	HDMI x1	HDMI x1	HDMI x1
I/O (Control)	RS232 x1 (In), RS232 x1 (Out) IR x1 (In), IR x1 (Out)	RS232 x1 (In), RS232 x1 (Out) IR x1 (In), IR x1 (Out)	RS232 x1 (In), RS232 x1 (Out), IR x1 (In), IR x1 (Out)	RS232 x1 (In), RS232 x1 (Out), IR x1 (In), IR x1 (Out)
I/O (Audio)	Audio x1 (Out)	Audio x1 (Out)	Audio x1 (Out)	Audio x1 (Out)
SDM Slot	Intel® SDM-S and -L Compatible (12V / 5A)	Intel® SDM-S and -L Compatible (12V / 5A)	Intel® SDM-S and -L Compatible (12V / 5A)	Intel® SDM-S and -L Compatible (12V / 5A)
Speaker	10W x 2	10W x 2	10W x 2	10W x 2
Power Consumption (typ.)	145W	170W	240W	280W
Outline Dimension (mm)	1236.6 x 706.5 x 58.9	1458.3 x 833.4 x 60	1675.7 x 953.7 x 80	1910.8 x 1091.2 x 80
Weight (kg)	20	35	62	76
Wall Mount (mm)	VESA 400 x 400	VESA 400 x 400	VESA 400 x 400	VESA 400 x 400
Product Life	50,000hr	50,000hr	50,000hr	50,000hr
Operation Hours	24 / 7	24 / 7	24 / 7	24 / 7
Operation Mode	Portrait / Landscape			



Product Specification

Product Name	PFSDM32A	PFSDM43B	PFSDM50A	PFSDM55B
Model	32" SDM	43" SDM	50" SDM	55" SDM
Resolution	1920 x 1080	1920 x 1080	1920 x 1080	1920 x 1080
Brightness	500 nits	500 nits	500 nits	500 nits
Contrast Ratio	4000:1	4000:1	4000:1	4000:1
I/O (Signal Input)	HDMI x1, DP x1, DVI-D x1, D-SUB x1	HDMI x1, DP x1, DVI-D x1, D-SUB x1	HDMI x1, DP x1, DVI-D x1, D-SUB x1	HDMI x1, DP x1, DVI-D x1, D-SUB x1
I/O (Control)	RS232 x1 (In), IR x1 (In)	RS232 x1 (In), IR x1 (In)	RS232 x1 (In), IR x1 (In)	RS232 x1 (In), IR x1 (In)
I/O (Audio)	Audio x1 (In), Audio x1 (Out)	Audio x1 (In), Audio x1 (Out)	Audio x1 (In), Audio x1 (Out)	Audio x1 (In), Audio x1 (Out)
SDM Slot	Intel® SDM-S and -L Compatible (12V / 5A)	Intel® SDM-S and -L Compatible (12V / 5A)	Intel® SDM-S and -L Compatible (12V / 5A)	Intel® SDM-S and -L Compatible (12V / 5A)
Speaker	10W x 2	10W x 2	10W x 2	10W x 2
Power Consumption (typ.)	35W	60W	150W	80W
Outline Dimension (mm)	725.8 x 420.3 x 57.9	971.5 x 567.5 x 53	1132.6 x 655.8 x 69.9	1242.4 x 722 x 53
Weight (kg)	8.8	10	14	17
Wall Mount (mm)	200 x 100	VESA 200 x 200	VESA 200 x 200	VESA 300 x 300
Product Life	50,000hr	50,000hr	50,000hr	50,000hr
Operation Hours	24 / 7	24 / 7	24 / 7	24 / 7
Operation Mode	Portrait / Landscape			

Note: Optional signal output x1 via SDM mode

GLOBAL CONTACTS

Taiwan

Corporate Headquarters / AUO Technology Center

No. 1, Li-Hsin Rd. 2, Hsinchu Science Park,
Hsinchu 30078, Taiwan
Tel: +886-3-500-8899
e-mail: info@auo.com

Taipei

9F., No. 198, Jingmao 2nd Rd.
Nangang Dist., Taipei City 11568, Taiwan
Tel: +886-2-2651-6688

Longtan

No. 1, Xinhe Rd., Aspire Park, Longtan
Dist., Taoyuan City 32543, Taiwan
Tel: +886-3-407-8899

Longke

No. 228, Longke St., Longke Science Park,
Longtan Dist., Taoyuan City 32542, Taiwan
Tel: +886-3-499-8899

Huaya

No. 189, Huaya 2nd Rd., Guishan Dist.,
Taoyuan City 33383, Taiwan
Tel: +886-3-396-8899

Taichung

No. 1, JhongKe Rd., Central Taiwan Science
Park, Taichung 40763, Taiwan
Tel: +886-4-2460-8899

Houli

No. 1, Machang Road, Central Taiwan
Science Park, Houli Dist., Taichung City
42143, Taiwan
Tel: +886-4-2559-8899

Tainan

No. 36, Keji 1st Rd., Tainan Technology
Industrial Park, Annan Dist., Tainan City
70955, Taiwan
Tel: +886-6-384-0011

Kaohsiung

No. 9, Luke 3rd Rd., Kaohsiung Science
Park, Luzhu Dist., Kaohsiung City 82151,
Taiwan
Tel: +886-7-695-5511

China

Kunshan

No. 6, Long Teng Road, Kunshan Economic
and Technical Development Zone 215300,
China
Tel: +86-512-5035-8800
e-mail: info@auo.com

Suzhou

No. 398, Suhong Zhong Road,
Suzhou Industrial Park 215021, China
Tel: +86-512-6258-8899

Xiamen

No. 1689, Xiang An North Road,
Xiang An Branch, Torch Hi-tech Industrial
Development Zone, Xiamen 361102, China
Tel: +86-592-788-8800

ShenZhen

Rm. 1501, No. 2009, Shahe West Road,
ShangMei Technology Building, Nanshan
Dist., ShenZhen City 518052, China
Tel: +86-755-2585-7795

Singapore

Singapore

10 Tampines Industrial Avenue 3,
Singapore, 528798
Tel: +65-6424-9888
e-mail: info@auo.com

Korea

AU Optronics Korea

No. 906, 9F, Gwanggyo Business Center,
156, Gwanggyo-ro, Yeongtong-gu, Suwon-si,
Gyeonggi-do, 16506, Korea
Tel: +82-31-8064-1021
e-mail: info@auo.com

USA

AU Optronics Corporation America

37085 Grand River Ave., Suite 340,
Farmington, MI 48335, USA
Tel: +1-408-518-8800
email: info@auo.com

Texas / San Diego / Irvine

Europe

AU Optronics Europe B.V.

Zekeringstraat 39B, 1014BV
Amsterdam, The Netherlands
Tel: +31-20-7940825
e-mail: info@auo.com

AU Optronics Europe B.V. German Branch

Charles-Lindbergh-Strasse 7, 71034
Böblingen, Germany
Tel: +49-7031-3097200

AU Optronics (Slovakia) s.r.o.

Bratislavská 517,
911 05 Trenčín, Slovak Republic
Tel: +420-533-455-288

Japan

AU Optronics Japan Tokyo

3-24-21 Sanwa Bld. 5F,
Shiba, Minato-Ku,
Tokyo 105-0014, Japan
Tel: +81-3-6414-7388
e-mail: info@auo.com

Osaka

MPR Shin Osaka Bld. 5F 4-3-7
Miyahara, Yodogawa-ku, Osaka City,
Osaka 532-0003, Japan
Tel: +81-3-6392-9288



Email: pid.service@auo.com
PID.AUO.COM

Dealer Stamp

© 2020 AU Optronics Corp. All rights reserved. Information may change without notice.
The Intel logo is a trademark of Intel Corporation or its subsidiaries in the U.S. and/or other countries.
All other trademarks are the property of their respective owners.